

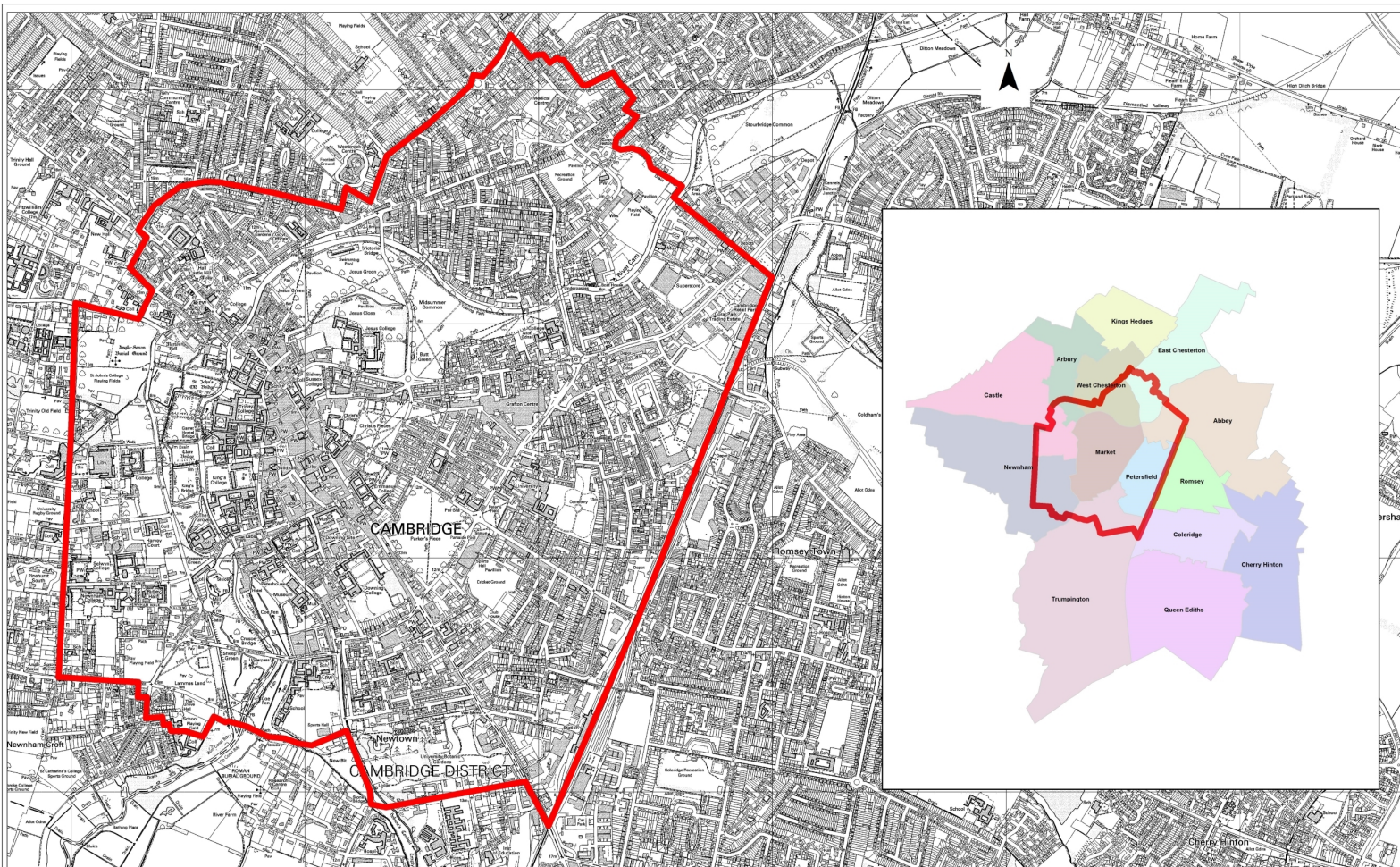
West Central Area Update 2010

Monitoring, Progress and Policy

Outline

- Background and Context
- Air Quality Monitoring Update
- Bus Emissions 2010
- CERC Assessment
- Oxford Bus Partnership

Air Quality Management Area

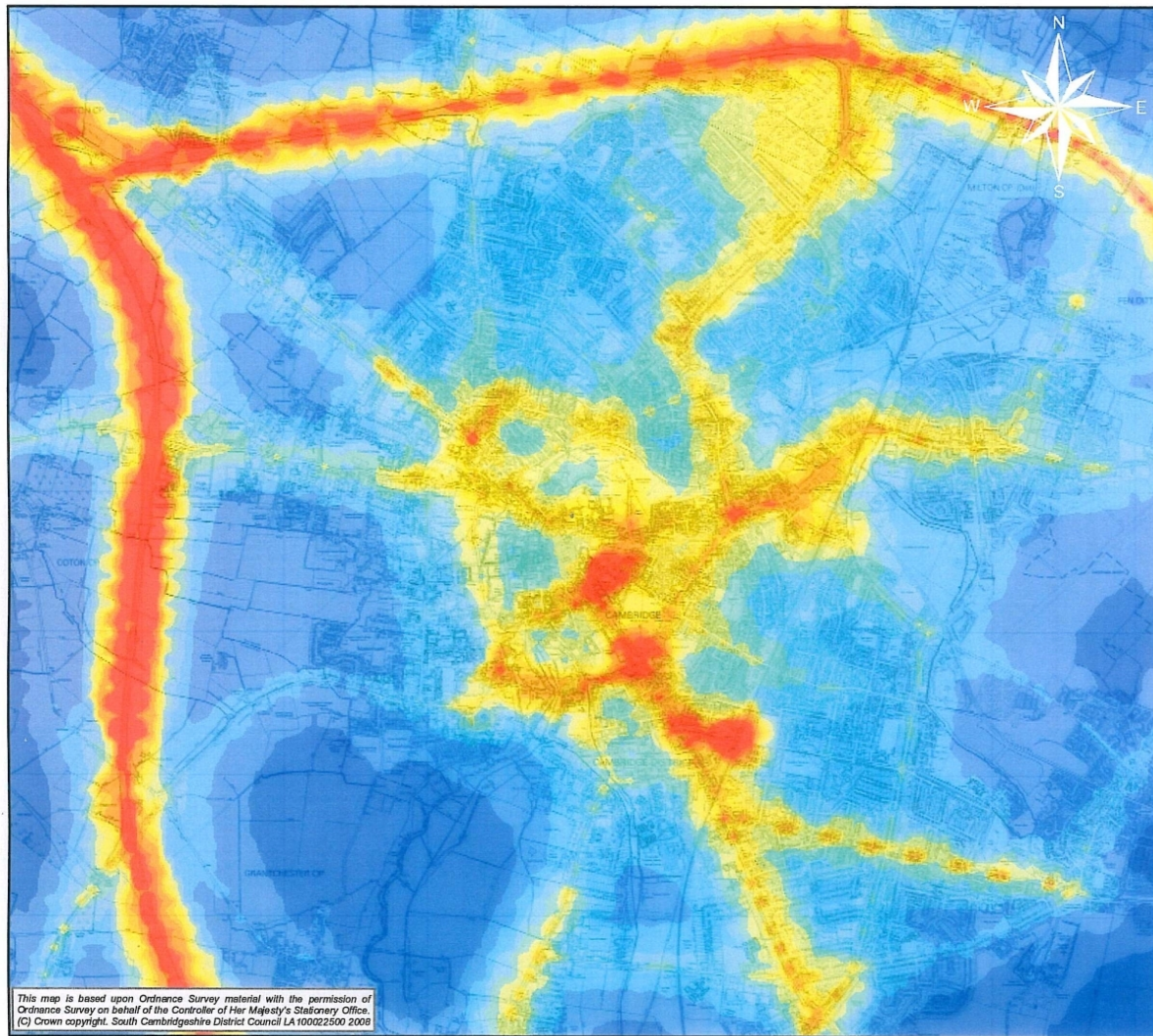


Cambridge City Council
Air Quality Management Area 2004

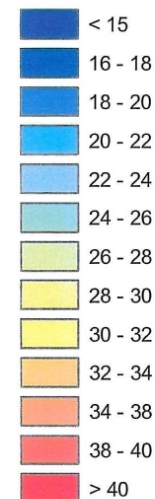
Date:	4th August 2004
Produced by:	Jo Dicks
Section/Department:	Environmental Health, Environment & Planning
Scale:	1:15,000

This map is reproduced from Ordnance Survey material with the permission of Her Majesty's Stationery Office (c) Crown copyright. Unauthorised reproduction infringes Crown copyright and may lead to prosecution or civil proceedings. Cambridge City Council (Licence No. LA 077372) 2004.

Areas of Poor air Quality



NO₂ concentration
($\mu\text{g}/\text{m}^3$)



CERC

**Cambridge City Council
& South Cambridgeshire
District Council**

Predicted annual average
NO₂ concentrations for the
2006 scenario

Figure 10.8

0 2 4 6 Kilometres

Action Timeline

- 2004 Declaration of AQMA for NO₂
- 2005 Agreement to integrate Air Quality Actions into LTP 2
- 2006 LTP 2 2006 – 2011 finalised
- 2006 Stage 4 Further Assessment
- 2007 Sustainable Design and Construction Supplementary Planning Guidance published
- 2008 Developers Guide to Air Quality finalised
- 2008 Quality Bus Partnership inaugurated

Current Activity

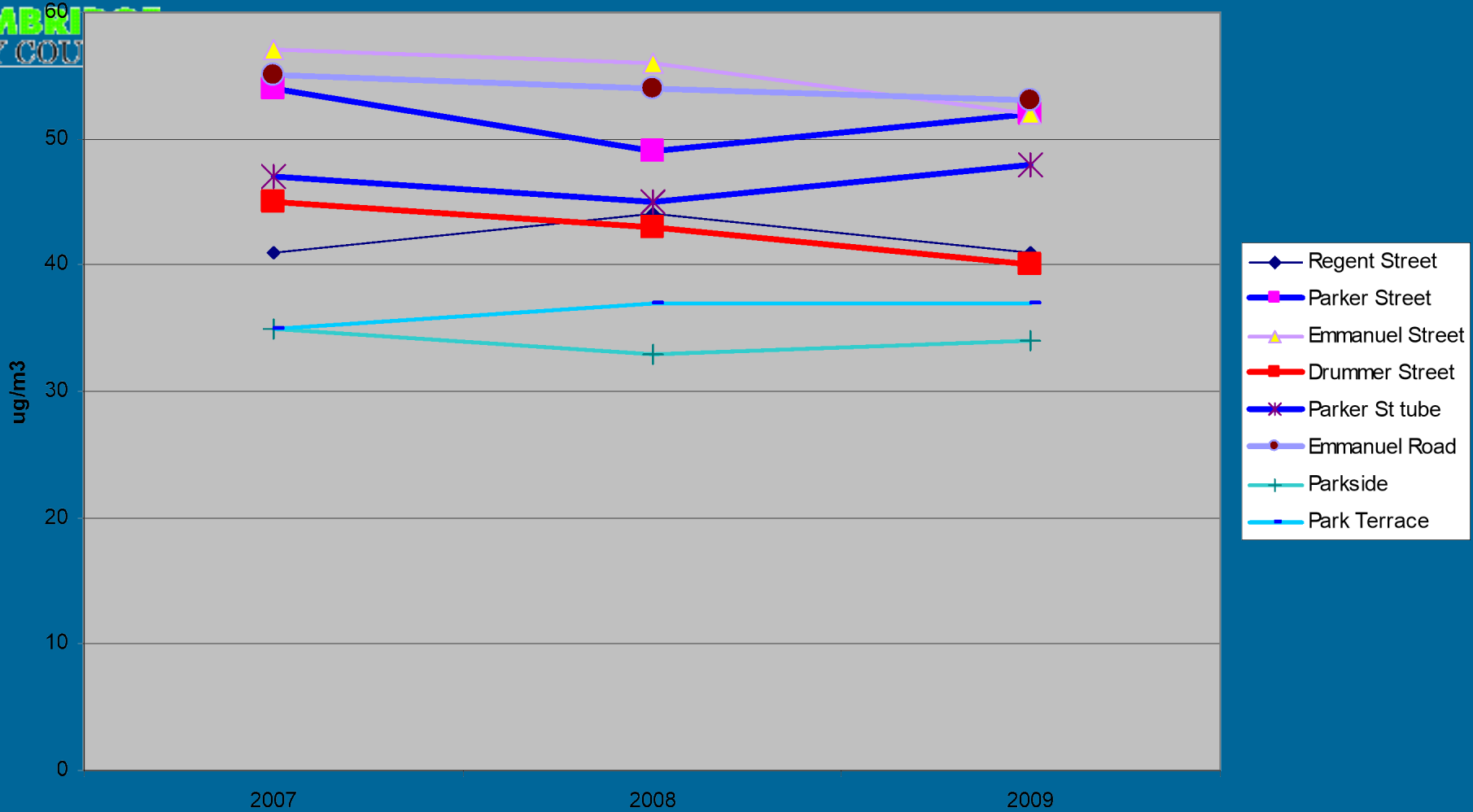
- Joint Air Quality Action plan Launched 2009
- Feeds in to LTP 3 due for completion in early 2011
- Joint Transport Forum Workshops to integrate conflicting transport demands in the Cambridge Sub- region

Air Quality Monitoring

- Good News – A downward trend is emerging in the City Centre
- PM10 and measured NO_x Falling
- Drummer Street – Significantly improved
- Parker Street Bucking the NO₂ Trend?



Core Area NO2 Conc.

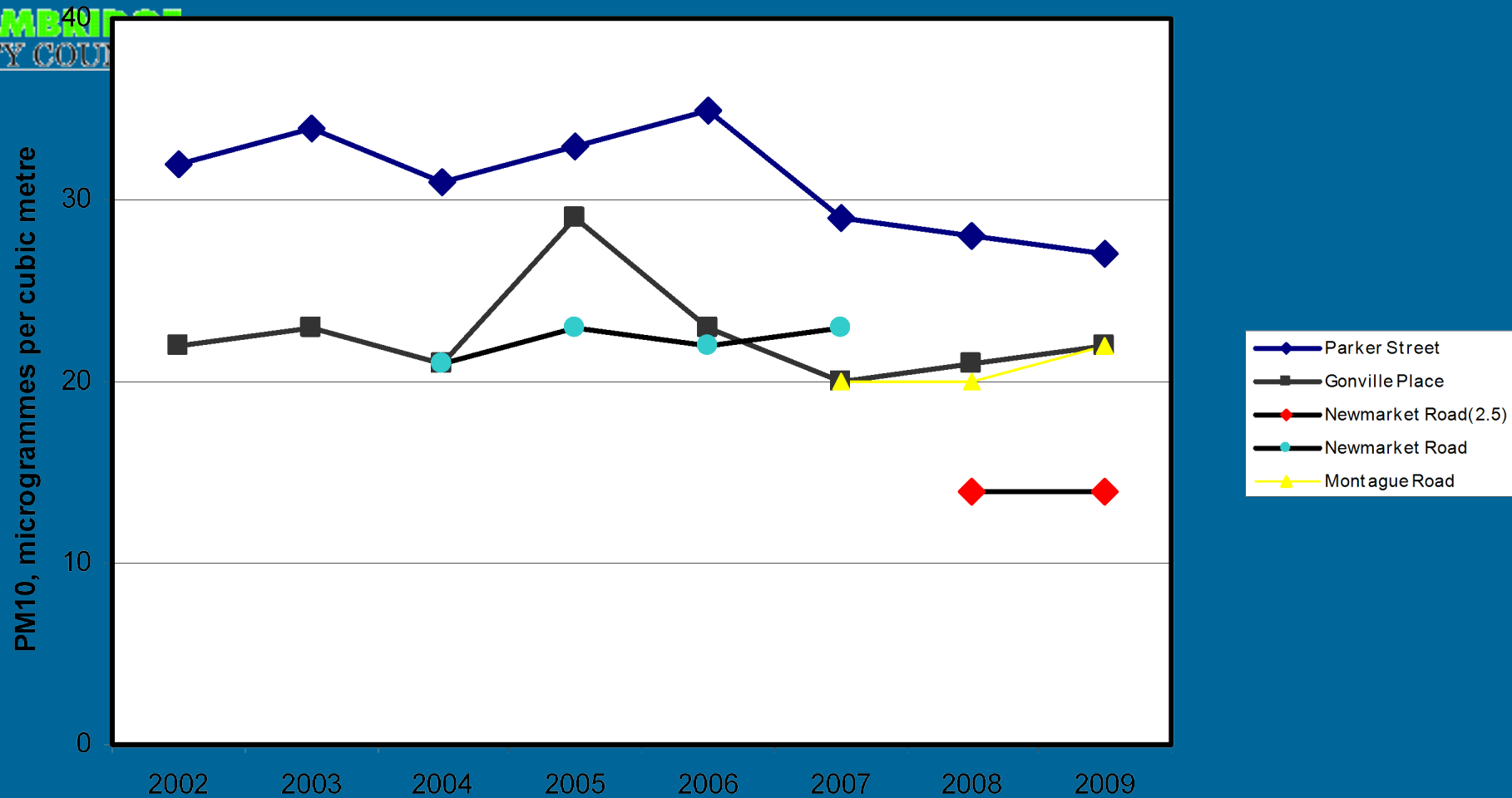




Continuous Monitors Outside Core Area NO2



Comparison of annual means of PM10 at continuously monitoring sites, 2002 - 2009





Aims Of The Commitment

1. To Improve City Centre Air Quality
2. To give certainty about action needed
3. Give operators flexibility in Delivery
4. To ensure fairness to all operators

How Will it Work?

- Calculated emissions in a fixed area
- Operator nitrogen oxides (NO_x) budgets
- Reducing each year
- 2008 baseline year
- 2015 target year
- Annual reporting requirement

Proposed Improvement Trajectory

Year	2008	2009	2010	2011	2012	2013	2014	2015
%NO _x emission Reduction	Baseline	10	10	7.5	7.5	5	5	5
Required NO _x emissions grams/wk	287160	258444	229728	208191	186654	172296	157938	143580

CERC Report

- Assesses likely result of implementing proposed emission plan
- The proposal would result in 25% reduction in NO₂ around the Bus station
- 10% reduction in NO₂ at ring road
- This would meet current legislation

Bus Emission Reduction Commitment

- More Good News – All main operators have reduced emissions since 2008
- Stagecoach NOx calculated emissions in the core area have dropped by 30% compared to the 2008 baseline
- Current emissions meet the proposed commitment trajectory up to the end of 2012

Oxford!

- Implemented LEZ 2009
- 100% achievement of Euro V standard by end of 2013
- Enforced by Traffic Regulation Condition



Any Questions?